

Reinventing Spaces  
**LOOM<sup>+</sup>**  
WOVEN DESIGN FLOORING

Designed and Manufactured by NOX Corporation

**Design Center & Office**

KD Center, 355, Hyoryeong-ro, Seocho-gu, Seoul, 06643 Korea  
Tel +82-2-520-7600  
Fax +82-2-598-9674  
www.noxglobal.com  
E-mail info@noxglobal.com

**NOX Corp. | KOREA**

Shinho Factory  
Shinho 2nd Factory, Yedang  
Enbo Factory  
Godeok Factory  
Bongsan Factory  
Deoksan Factory  
Choongnam, Korea

**NOX US | USA**

NOX US  
P.O. Box 824  
931 S. Springville Avenue  
Fostoria, OH 44830  
Office +01-419-701-5060  
Fax +01-419-701-5058

## HERRINGBONE

Classic & Cozy



**LOOM<sup>+</sup>**  
WOVEN DESIGN FLOORING

LOOM+  
DIFFERENCE

# LOOM+ DIFFERENCE

DESIGN AND TECHNOLOGY  
ARE WOVEN TOGETHER

## Infinite DESIGN spectrum

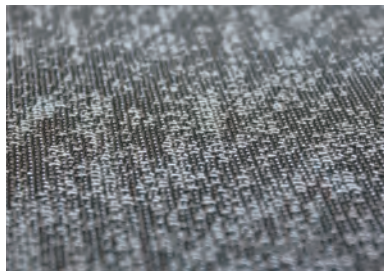
Only LOOM+ enables unique variation of creating your own floor by mixing and matching different patterns in two tile sizes.

## Distinguished NOX EMT™ Core Structure

The first woven flooring with proven NOX EMT™ core structure that ensures the most stable and durable installation.

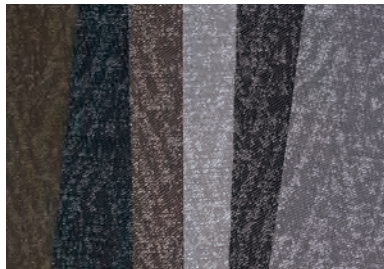
# LOOM+ DESIGN

PLAY with COLOR, SIZE and TEXTURE



## Profound Color Composition

Realizing multiple tones of color - carefully selected by artists - we provide you with very unique colors that expresses LOOM+ in harmony with surrounding interiors.



## Infinite array of color and texture

Available in 59 colors covering diverse tones like neutral, cool, warm, light, and dark in five different yarn thicknesses, we give you nine unique design patterns.



## Designed for mix & match

Creative and unique 'mix & match' only by LOOM+ is realized by introducing the same weaving system to nine design patterns.



50x50cm  
Standard size



25x100cm  
Plank size

## Optimal 2 Size variation

With our unique 2 module sizes of 50cmx50cm and 25cmx100cm, the first introduced in woven flooring market, you can elevate the flat environments to inspiring interior spaces.

# LOOM+ TECHNOLOGY

PROVEN INNOVATION



## Distinguished NOX EMT™ Core Structure

NOX EMT™ core structure featured with innovative functionality and safety, proven in more than 50 countries over 20 years



### Clean & Tough



- + The first & only in woven flooring with NOX EPT™ shield treatment (Anti-Bacterial)
- + Strong enough for heavy commercial use

### Dimensional Stability & Consistent Thickness



- + The most reliable NOX EMT™ core structure
- + Consistent product thickness by patterns for mix & match with different patterns

### Fray-Proof



- + Clean-cut finishing for preventing fraying even when cutting tiles during installation



### Safe

Certified non-toxic, phthalate-free, and fiberglass-free fabric



### Quick

Quick and Easy ECOLAY® installation without glue



### Easy

Minimal cleaning time and low maintenance



### Silent & Soft

Soft surface absorbing sound



### Non-Slip

Slip-resistance with woven fabric surface



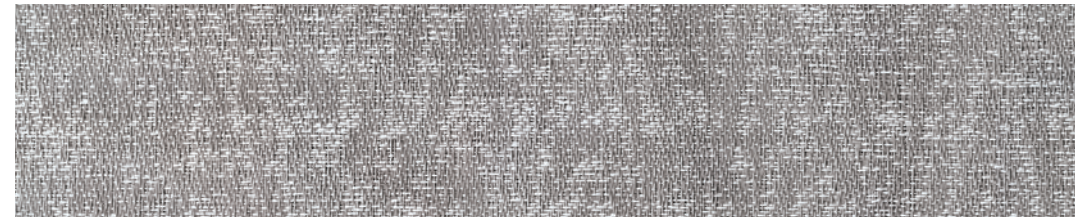
### Colorfast

Colorfast properties retain gorgeous original colors over time

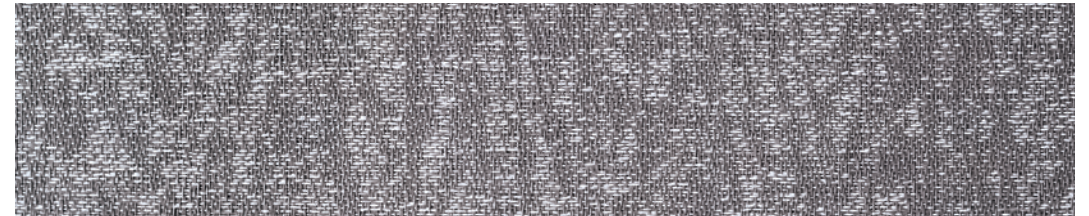
# HERRINGBONE

Classic & Cozy

NOX Herringbone collection offers versatility using cool and warm natural accent tones to create artistic design and comfort in any room. Offered in our new 25cmx100cm plank format, providing a rustic appearance when installed in an ashlar paving pattern.



FQ-2501



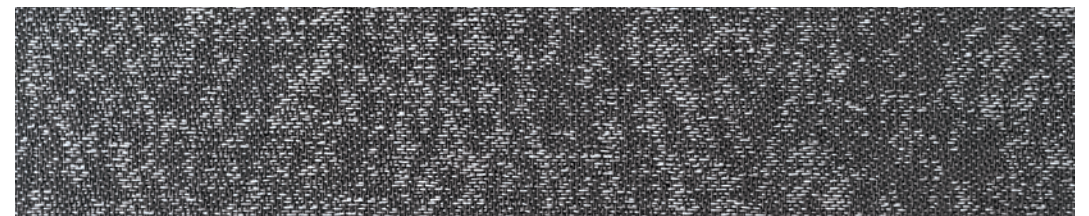
FQ-2502



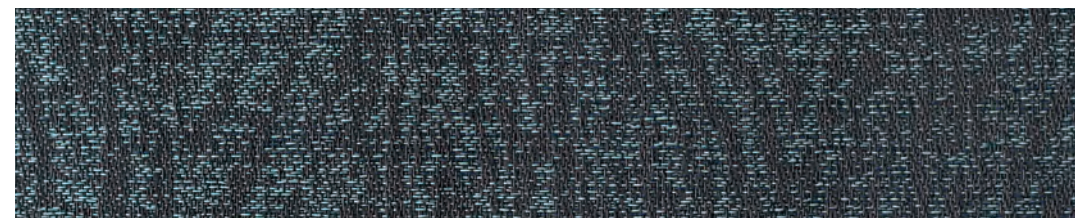
FQ-2503



FQ-2504



FQ-2505



FQ-2506

Reinvent Spaces with

# LOOM<sup>+</sup> PLAY!

New 25cmx100cm MIXMATCH plank brings new proportion and scale to your flooring to create fresh and exciting designs. In addition to new MIXMATCH plank, LOOM<sup>+</sup> modular system includes 50cmx50cm squares.

All work together in any combination, giving you the freedom to create your own design by mixing & matching different patterns and colors in 2 size variations.

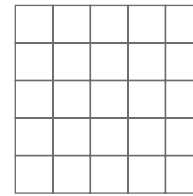


50x50cm

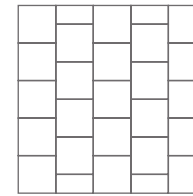


25x100cm

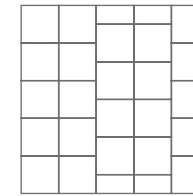
## INSTALLATION CONCEPT GUIDE



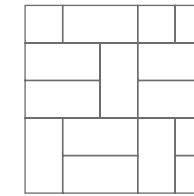
LOOM PLAY #1



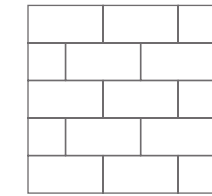
LOOM PLAY #2



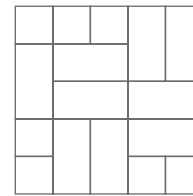
LOOM PLAY #3



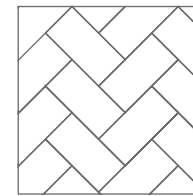
LOOM PLAY #4



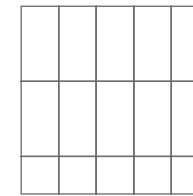
LOOM PLAY #5



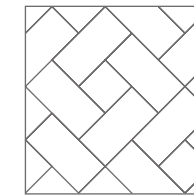
LOOM PLAY #6



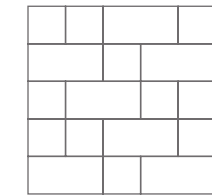
LOOM PLAY #7



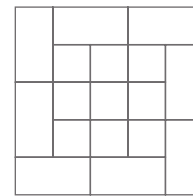
LOOM PLAY #8



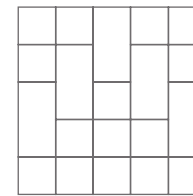
LOOM PLAY #9



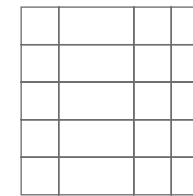
LOOM PLAY #10



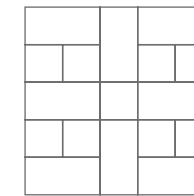
LOOM PLAY #11



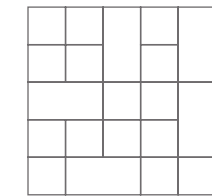
LOOM PLAY #12



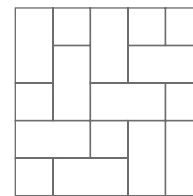
LOOM PLAY #13



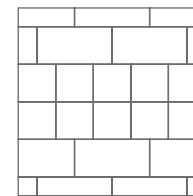
LOOM PLAY #14



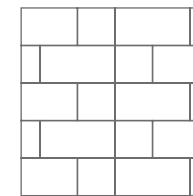
LOOM PLAY #15



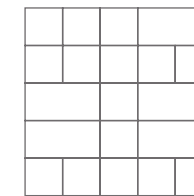
LOOM PLAY #16



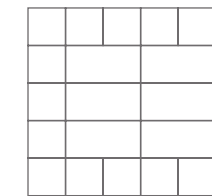
LOOM PLAY #17



LOOM PLAY #18

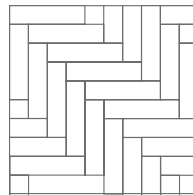


LOOM PLAY #19

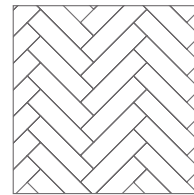


LOOM PLAY #20

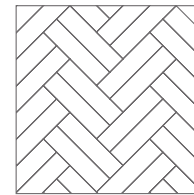
## NEW LOOM<sup>+</sup> PLAY!



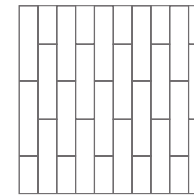
LOOM PLAY #21



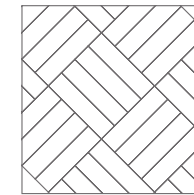
LOOM PLAY #22



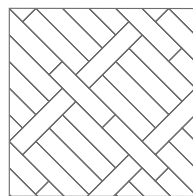
LOOM PLAY #23



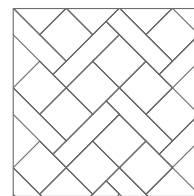
LOOM PLAY #24



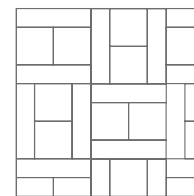
LOOM PLAY #25



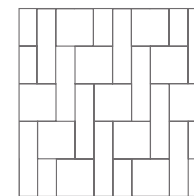
LOOM PLAY #26



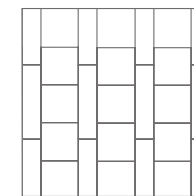
LOOM PLAY #27



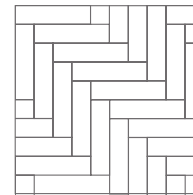
LOOM PLAY #28



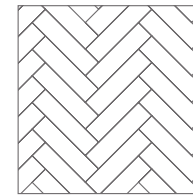
LOOM PLAY #29



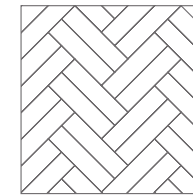
LOOM PLAY #30



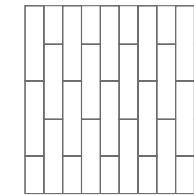
LOOM PLAY #21



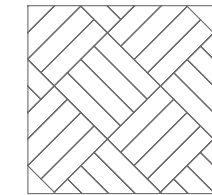
LOOM PLAY #22



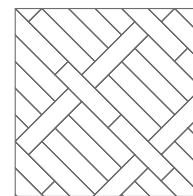
LOOM PLAY #23



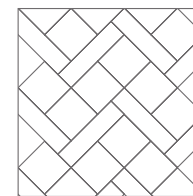
LOOM PLAY #24



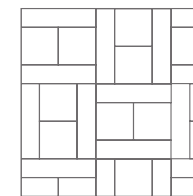
LOOM PLAY #25



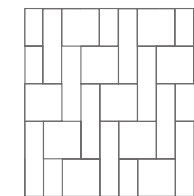
LOOM PLAY #26



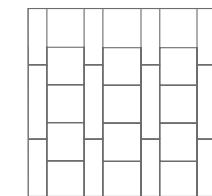
LOOM PLAY #27



LOOM PLAY #28



LOOM PLAY #29



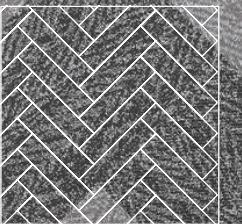
LOOM PLAY #30

Residential

GLOBAL  
REFERENCES

**LOOM<sup>+</sup>**  
**CREATE**  
**YOUR OWN DESIGN**

FQ-2501 FQ-2502

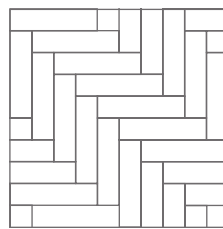


LOOM PLAY #22

Restaurant



FQ-2502 FQ-2503  
FQ-2505

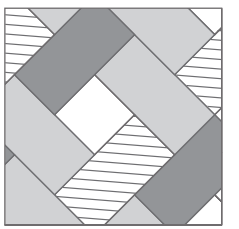


LOOM PLAY #21

Corporate



FQ-2501 FQ-2502  
FQ-2506

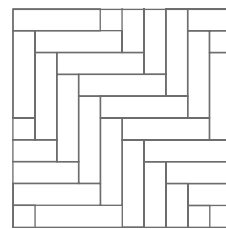


LOOM+ PLAY  
MIX&MATCH

Retail shop



FQ-2501 FQ-2505  
FQ-2506

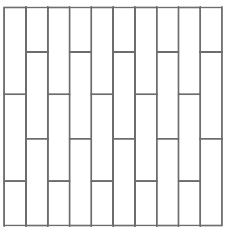


LOOM PLAY #21

Hospitality



FQ-2503



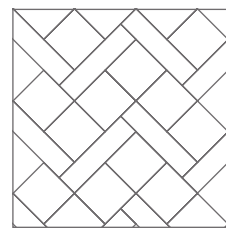
LOOM PLAY #24



Education & Libraries



FQ-2501 FQ-2502  
FQ-2505 FQ-2506

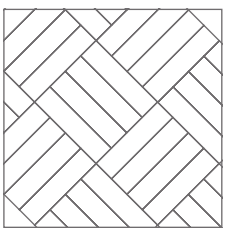


LOOM PLAY #27

Healthcare

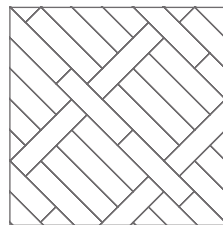


FQ-2502 FQ-2503  
FQ-2504 FQ-2505



LOOM PLAY #25

## Sports Center



LOOM PLAY #26

FQ-2501 FQ-2502  
FQ-2505

## TECHNICAL INFORMATION

### 1. Size & Packing

Size(mm)	Thickness(mm)	Pcs/Box	m <sup>2</sup> /Box	Kg/m <sup>2</sup>
500x500	3	16 pcs/box	4 m <sup>2</sup>	5.0
	5	10 pcs/box	2.5m <sup>2</sup>	8.2
250x1000	3	16 pcs/box	4 m <sup>2</sup>	5.0
	5	10 pcs/box	2.5m <sup>2</sup>	8.2

### 2. Test Result

Test Item		Standard	LOOM <sup>+</sup>
Level of use		EN 685	33
Fraying		EN 1814	Frayproof
Thermal resistance		ISO 8302	0.02m <sup>2</sup> K/W
Castor chair resistance		EN 985	No damage
Dimensional stability		ISO 23999 EN 986	≤ 0.10% ( Norm: ≤ 0.25% ) Passed
Fire resistance		EN 13501-1	Bfl -s1
Indoor air quality			Low VOC (floor score certified)
Underfloor heating		EN 12524	Suitable
Light fastness		ISO 105-B02	≥ 6
Slip resistance		DIN 51130 EN 13893	R11 DS
Flexibility		ISO 24344	Passed
Impact sound insulation		ISO 10140-3	9dB
Body Voltage		EN 1815	≤ 2KV
Squareness & Straightness		ISO 24342 ASTM F2055	No deviation ≤ 0.01 in
Residual indentation		ISO 24343-1 ASTM F1914	≤ 0.1mm < 8%
Resistance to chemicals		ISO 26987 ASTM F925	No Defects No Defects

### 3. Caution

Condition in at least 19°C or the normal temperature of the room where the product is to be laid, for at least 48 hours before installing. Cartons must be stacked less than 5 high and tiles removed 30 minutes before use. The site conditions must be maintained during installation and for at least 48 hours after completion. NOX Corporation will not accept claims where these instructions have not been followed.

### 4. Certificate



Visit [www.loomplus.com](http://www.loomplus.com) for the detailed installation / maintenance guides and technical information.

Reinventing Spaces  
**LOOM<sup>+</sup>**  
 WOVEN DESIGN FLOORING

Designed and Manufactured by NOX Corporation

**Design Center & Office**

KD Center, 355, Hyoryeong-ro, Seocho-gu, Seoul, 06643 Korea  
 Tel +82-2-520-7600  
 Fax +82-2-598-9674  
 www.noxglobal.com  
 E-mail info@noxglobal.com

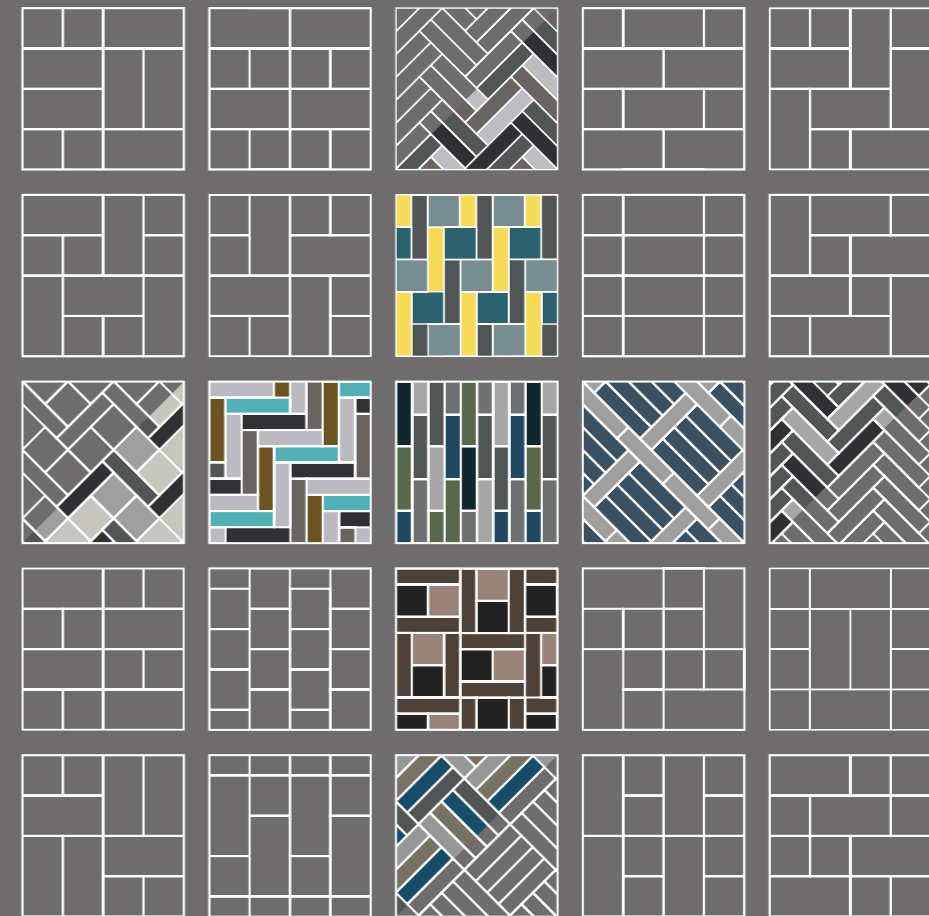
**NOX Corp. | KOREA**

Shinho Factory  
 Shinho 2nd Factory, Yedang  
 Enbo Factory  
 Godeok Factory  
 Bongsan Factory  
 Deoksan Factory  
 Choongnam, Korea

**NOX US | USA**

NOX US  
 P.O. Box 824  
 931 S. Springville Avenue  
 Fostoria, OH 44830  
 Office +01-419-701-5060  
 Fax +01-419-701-5058

**OMBRE**  
 Inspirational & Unique



**LOOM<sup>+</sup>**  
 WOVEN DESIGN FLOORING

LOOM+  
DIFFERENCE

# LOOM+ DIFFERENCE

DESIGN AND TECHNOLOGY  
ARE WOVEN TOGETHER

## Infinite DESIGN spectrum

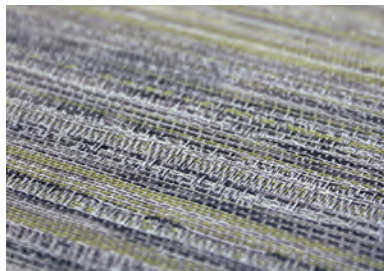
Only LOOM+ enables unique variation of creating your own floor by mixing and matching different patterns in two tile sizes.

## Distinguished NOX EMT™ Core Structure

The first woven flooring with proven NOX EMT™ core structure that ensures the most stable and durable installation.

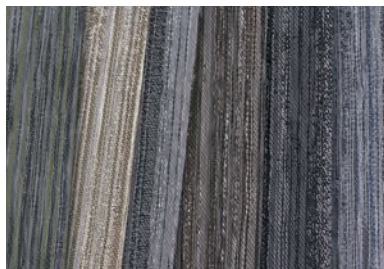
# LOOM+ DESIGN

PLAY with COLOR, SIZE and TEXTURE



## Profound Color Composition

Realizing multiple tones of color - carefully selected by artists - we provide you with very unique colors that express LOOM+ in harmony with surrounding interiors.



## Infinite array of color and texture

Available in 59 colors covering diverse tones like neutral, cool, warm, light, and dark in five different yarn thicknesses, we give you nine unique design patterns.



## Designed for mix & match

Creative and unique 'mix & match' only by LOOM+ is realized by introducing the same weaving system to nine design patterns.



50x50cm  
Standard size



25x100cm  
Plank size

## Optimal 2 Size variation

With our unique 2 module sizes of 50cmx50cm and 25cmx100cm, the first introduced in woven flooring market, you can elevate the flat environments to inspiring interior spaces.

# LOOM+ TECHNOLOGY

PROVEN INNOVATION



## Distinguished NOX EMT™ Core Structure

NOX EMT™ core structure featured with innovative functionality and safety, proven in more than 50 countries over 20 years



**Safe**  
Certified non-toxic, phthalate-free, and fiberglass-free fabric



**Quick**  
Quick and Easy ECOLAY® installation without glue



**Easy**  
Minimal cleaning time and low maintenance



**Silent & Soft**  
Soft surface absorbing sound



**Non-Slip**  
Slip-resistance with woven fabric surface

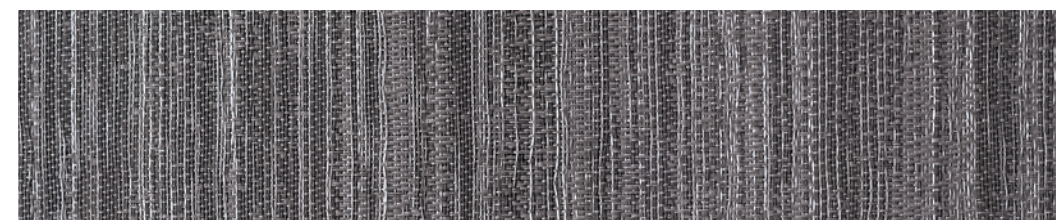


**Colorfast**  
Colorfast properties retain gorgeous original colors over time

# OMBRE

Inspirational & Unique

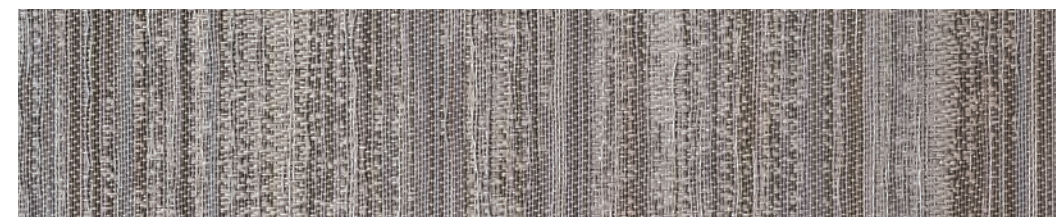
NOX Ombre collection offers a unique linear pattern, rich texture and beautiful accent tones available in 6 sophisticated colors in our new 25cmx100cm plank. Designed to capture its audience with expanding and contracting rhythms.



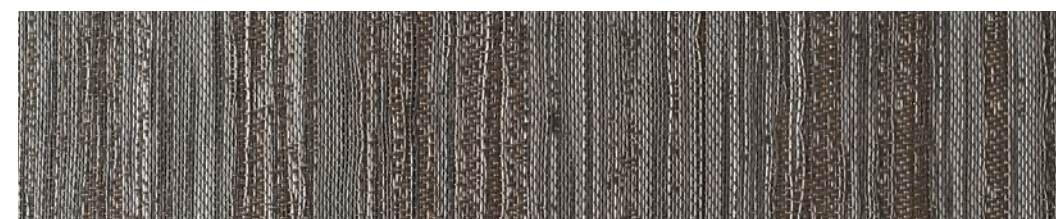
FQ-2401



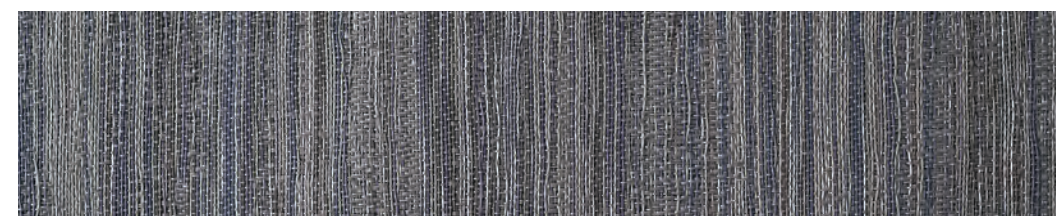
FQ-2402



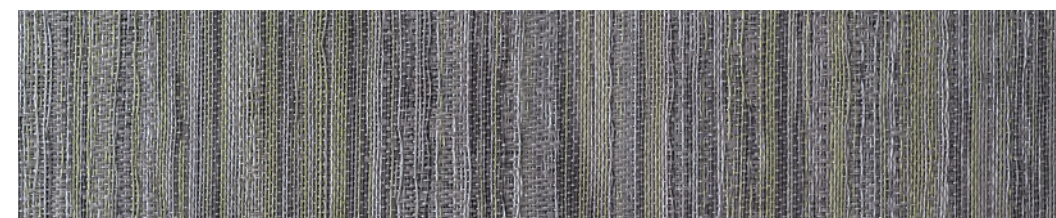
FQ-2403



FQ-2404



FQ-2405



FQ-2406

Reinvent Spaces with

# LOOM<sup>+</sup> PLAY!

New 25cmx100cm MIXMATCH plank brings new proportion and scale to your flooring to create fresh and exciting designs. In addition to new MIXMATCH plank, LOOM<sup>+</sup> modular system includes 50cmx50cm squares.

All work together in any combination, giving you the freedom to create your own design by mixing & matching different patterns and colors in 2 size variations.

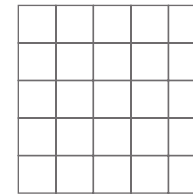


50x50cm

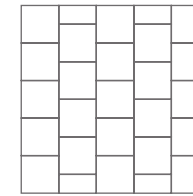


25x100cm

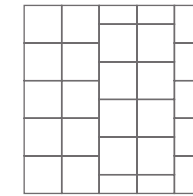
## INSTALLATION CONCEPT GUIDE



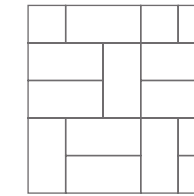
LOOM PLAY #1



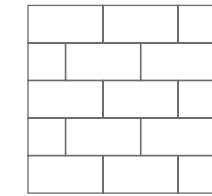
LOOM PLAY #2



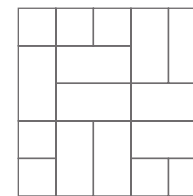
LOOM PLAY #3



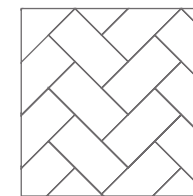
LOOM PLAY #4



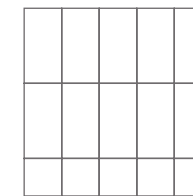
LOOM PLAY #5



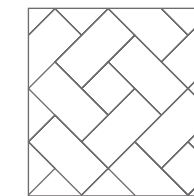
LOOM PLAY #6



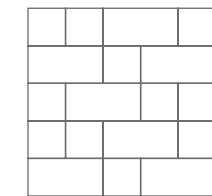
LOOM PLAY #7



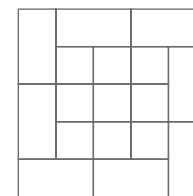
LOOM PLAY #8



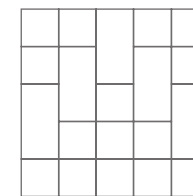
LOOM PLAY #9



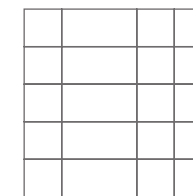
LOOM PLAY #10



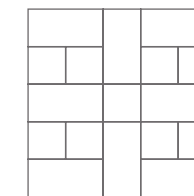
LOOM PLAY #11



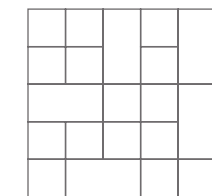
LOOM PLAY #12



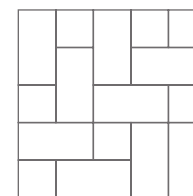
LOOM PLAY #13



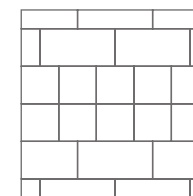
LOOM PLAY #14



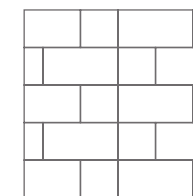
LOOM PLAY #15



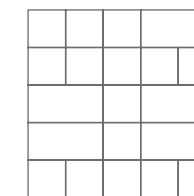
LOOM PLAY #16



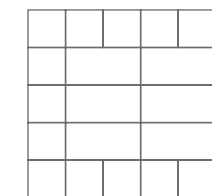
LOOM PLAY #17



LOOM PLAY #18

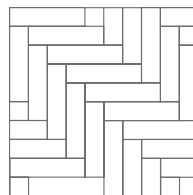


LOOM PLAY #19

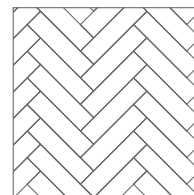


LOOM PLAY #20

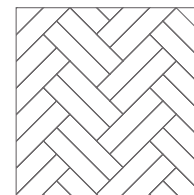
## NEW LOOM<sup>+</sup> PLAY!



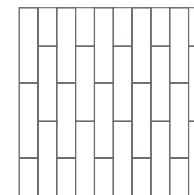
LOOM PLAY #21



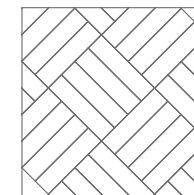
LOOM PLAY #22



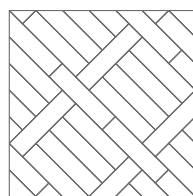
LOOM PLAY #23



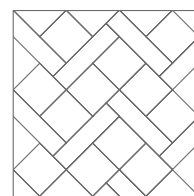
LOOM PLAY #24



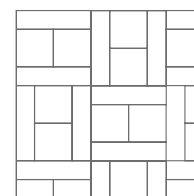
LOOM PLAY #25



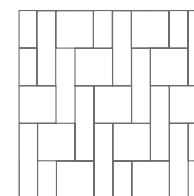
LOOM PLAY #26



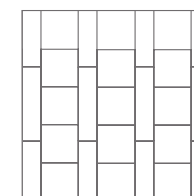
LOOM PLAY #27



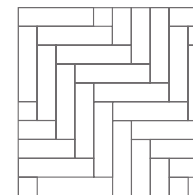
LOOM PLAY #28



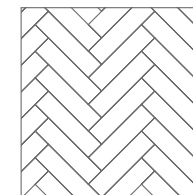
LOOM PLAY #29



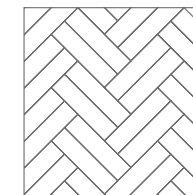
LOOM PLAY #30



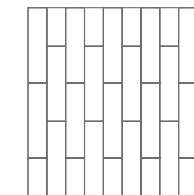
LOOM PLAY #21



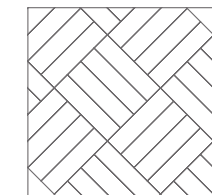
LOOM PLAY #22



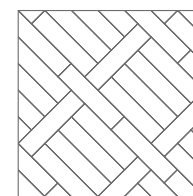
LOOM PLAY #23



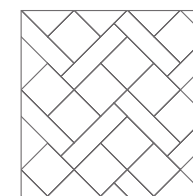
LOOM PLAY #24



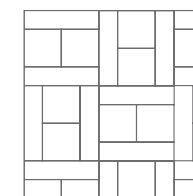
LOOM PLAY #25



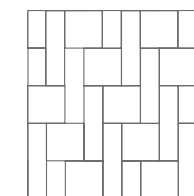
LOOM PLAY #26



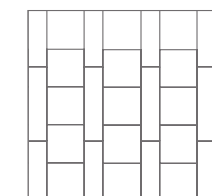
LOOM PLAY #27



LOOM PLAY #28



LOOM PLAY #29



LOOM PLAY #30

Residential

GLOBAL  
REFERENCES

# LOOM<sup>+</sup> CREATE YOUR OWN DESIGN

FQ-2403 FQ-2404



LOOM PLAY #22





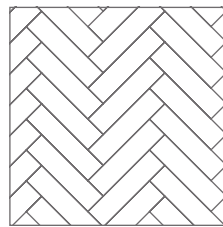
Corporate



Healthcare

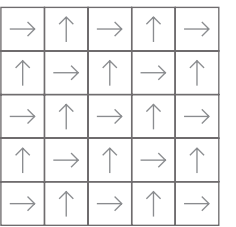


FQ-2401 FQ-2402 FQ-2403  
FQ-2404 FQ-2405 FQ-2406



LOOM PLAY #22

FQ-2401

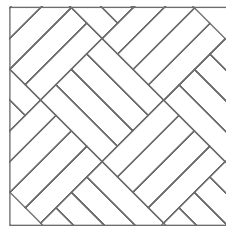


LOOM PLAY #1

Retail shop



FQ-2402 FQ-2406

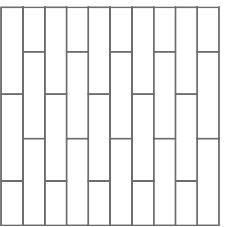


LOOM PLAY #25

Hospitality



FQ-2403

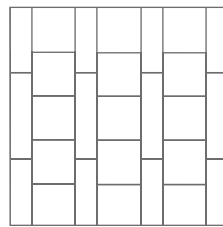


LOOM PLAY #24

Education & Libraries



FQ-2402 FQ-2405  
FQ-2406

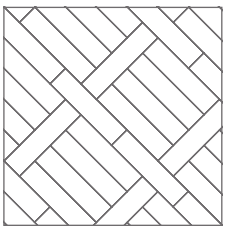


LOOM PLAY #30

Restaurant

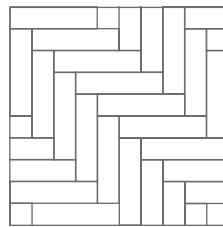


FQ-2403 FQ-2404



LOOM PLAY #26

## Hospitality



LOOM PLAY #21

FQ-2401 FQ-2402  
FQ-2404

## TECHNICAL INFORMATION

### 1. Size & Packing

Size(mm)	Thickness(mm)	Pcs/Box	m <sup>2</sup> /Box	Kg/m <sup>2</sup>
500x500	3	16 pcs/box	4 m <sup>2</sup>	5.0
	5	10 pcs/box	2.5m <sup>2</sup>	8.2
250x1000	3	16 pcs/box	4 m <sup>2</sup>	5.0
	5	10 pcs/box	2.5m <sup>2</sup>	8.2

### 2. Test Result

Test Item		Standard	LOOM <sup>+</sup>
Level of use		EN 685	33
Fraying		EN 1814	Frayproof
Thermal resistance		ISO 8302	0.02m <sup>2</sup> K/W
Castor chair resistance		EN 985	No damage
Dimensional stability		ISO 23999 EN 986	≤ 0.10% ( Norm: ≤ 0.25% ) Passed
Fire resistance		EN 13501-1	Bfl -s1
Indoor air quality			Low VOC (floor score certified)
Underfloor heating		EN 12524	Suitable
Light fastness		ISO 105-B02	≥ 6
Slip resistance		DIN 51130 EN 13893	R11 DS
Flexibility		ISO 24344	Passed
Impact sound insulation		ISO 10140-3	9dB
Body Voltage		EN 1815	≤ 2KV
Squareness & Straightness		ISO 24342 ASTM F2055	No deviation ≤ 0.01 in
Residual indentation		ISO 24343-1 ASTM F1914	≤ 0.1mm < 8%
Resistance to chemicals		ISO 26987 ASTM F925	No Defects No Defects

### 3. Caution

Condition in at least 19°C or the normal temperature of the room where the product is to be laid, for at least 48 hours before installing. Cartons must be stacked less than 5 high and tiles removed 30 minutes before use. The site conditions must be maintained during installation and for at least 48 hours after completion. NOX Corporation will not accept claims where these instructions have not been followed.

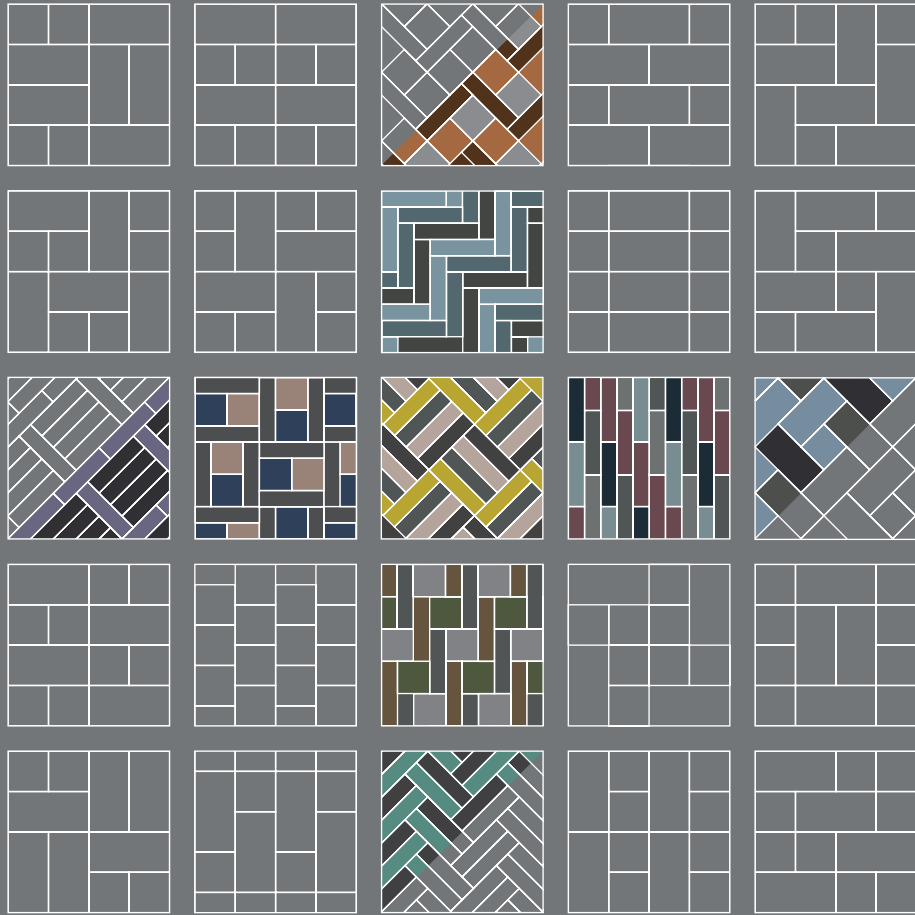
### 4. Certificate



Visit [www.loomplus.com](http://www.loomplus.com) for the detailed installation / maintenance guides and technical information.

# MÉLANGE

Simple & Sophisticated



 **LOOM<sup>+</sup>**

WOVEN DESIGN FLOORING



# LOOM<sup>+</sup> DIFFERENCE

DESIGN AND TECHNOLOGY  
ARE WOVEN TOGETHER

## Better Floor

The tangible textile feeling of M<sup>é</sup>lange collection closely resembles the original material while exhibiting far superior qualities



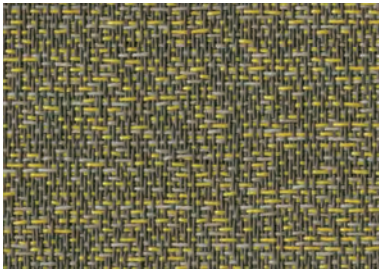
LOOM+  
DIFFERENCE

## Distinguished NOX EMT™ Core Structure

The first woven flooring with proven NOX EMT™ Core structure that ensures the most stable and durable installation.

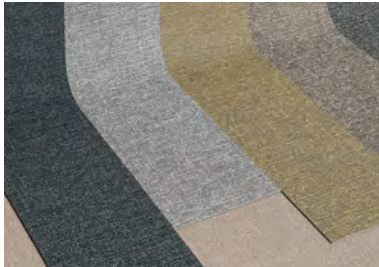
# LOOM+ DESIGN

## PLAY with COLOR, SIZE and TEXTURE



### Profound Color Composition

Realizing multiple tones of color - carefully selected by artists - we provide you with very unique colors that express LOOM+ in harmony with surrounding interiors.



### Infinite array of color and texture

Available in myriad colors covering diverse tones like neutral, cool, warm, light and dark tones, we give you unique design patterns.



### Designed for mix & match

Creative and unique 'mix & match' only by LOOM+ is realized by introducing the same weaving system to various design patterns.



50x50cm  
Tile size



25x100cm  
Plank size

### Optimal 2 Size variation

With our unique 2 module sizes of 50cmx50cm and 25cmx100cm, the first introduced in woven flooring market, you can elevate flat environments to inspiring interior spaces.



# LOOM+ TECHNOLOGY

## PROVEN INNOVATION



### Distinguished NOX EMT™ Core Structure

NOX EMT™ Core structure featured with innovative functionality and safety, proven in more than 50 countries over 20 years



#### Clean & Hygienic (Anti-Microbial)



- + The first & only in woven flooring with NOX EPT™ Shield treatment (Anti-Bacterial and Anti-Fungal coating system validated by UL)
- + Strong enough for heavy commercial use

#### Dimensional Stability & Consistent Thickness



- + The most reliable NOX EMT™ Core structure
- + Consistent product thickness by patterns for mix & match with different patterns

#### Fray-Proof



- + Clean-cut finishing for preventing fraying even when cutting tiles during installation



#### Safe

Certified non-toxic, phthalate-free, and fiberglass-free fabric



#### Quick

Quick and easy loose lay® installation without glue



#### Easy

Minimal cleaning time and low maintenance



#### Silent & Soft

Soft surface absorbing sound



#### Non-Slip

Slip-resistance with woven fabric surface



#### Colorfast

Colorfast properties retain gorgeous original colors over time

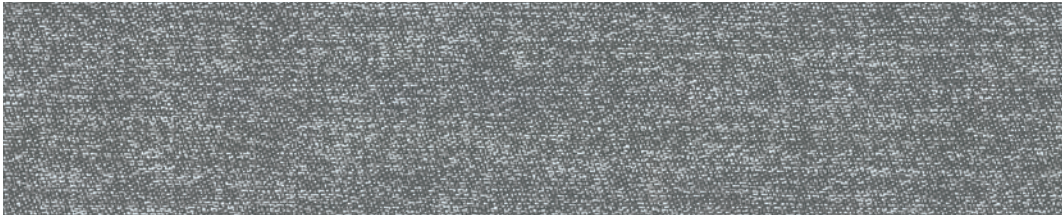
# MÉLANGE

Simple & Sophisticated

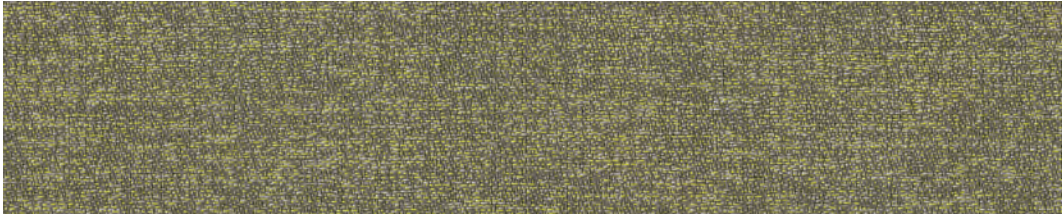
NOX Mélange collection offers a true extent of nature's tree bark or dry soil. This softly rich pattern is a disordered mixture of similar shades, maximizing LOOM+ mix & match possibilities in well-matched and diversified color blends.

Enrich your space with LOOM+ Mélange, an earthy collection that adds a simple yet ultimate essence of sophistication.

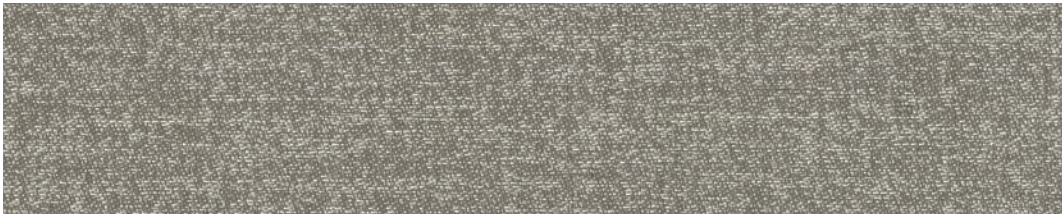




FQ-2601



FQ-2602



FQ-2603



FQ-2604



FQ-2605



FQ-2606

Reinvent Spaces with

# LOOM<sup>+</sup> PLAY!

All work together in any combination, giving you the freedom to create your own design by mixing & matching different patterns and colors in 2 size variations.

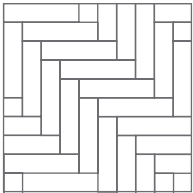


50x50cm

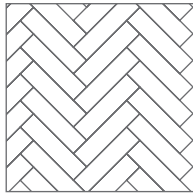


25x100cm

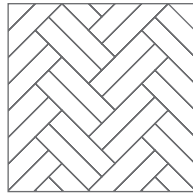
## NEW LOOM<sup>+</sup> PLAY!



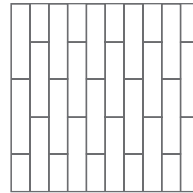
LOOM PLAY #21



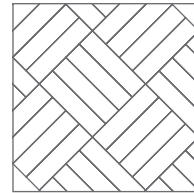
LOOM PLAY #22



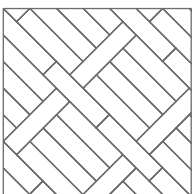
LOOM PLAY #23



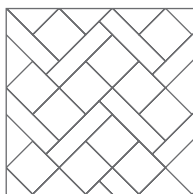
LOOM PLAY #24



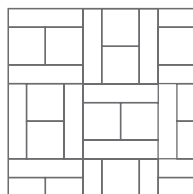
LOOM PLAY #25



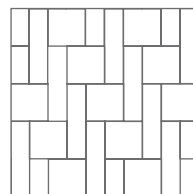
LOOM PLAY #26



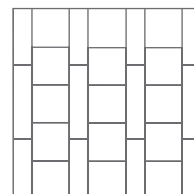
LOOM PLAY #27



LOOM PLAY #28

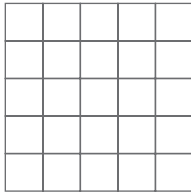


LOOM PLAY #29

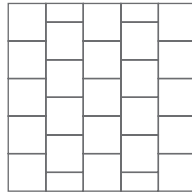


LOOM PLAY #30

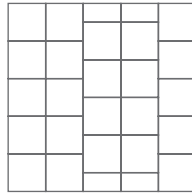
## INSTALLATION CONCEPT GUIDE



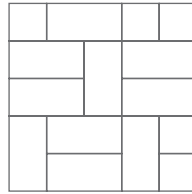
LOOM PLAY #1



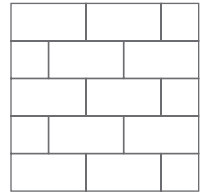
LOOM PLAY #2



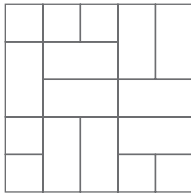
LOOM PLAY #3



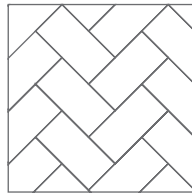
LOOM PLAY #4



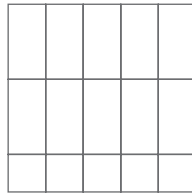
LOOM PLAY #5



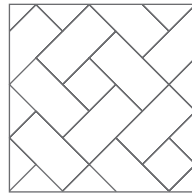
LOOM PLAY #6



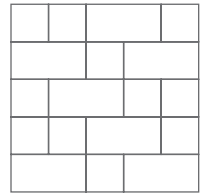
LOOM PLAY #7



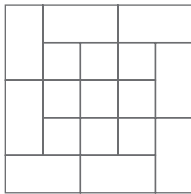
LOOM PLAY #8



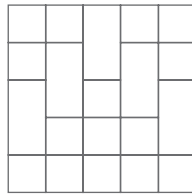
LOOM PLAY #9



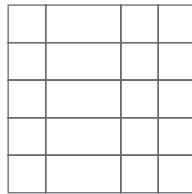
LOOM PLAY #10



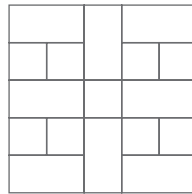
LOOM PLAY #11



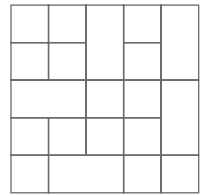
LOOM PLAY #12



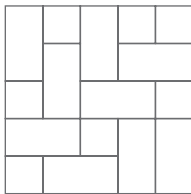
LOOM PLAY #13



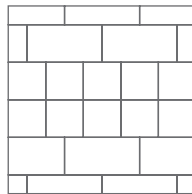
LOOM PLAY #14



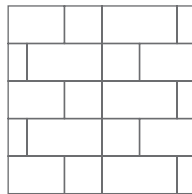
LOOM PLAY #15



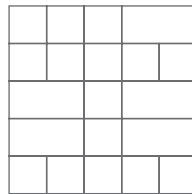
LOOM PLAY #16



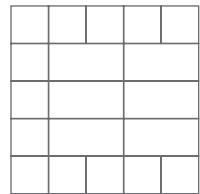
LOOM PLAY #17



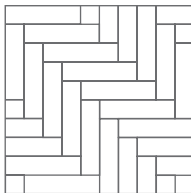
LOOM PLAY #18



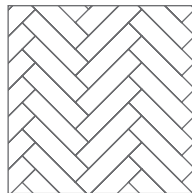
LOOM PLAY #19



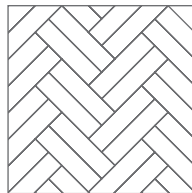
LOOM PLAY #20



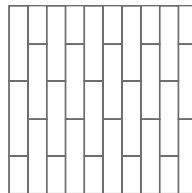
LOOM PLAY #21



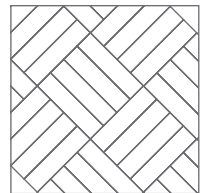
LOOM PLAY #22



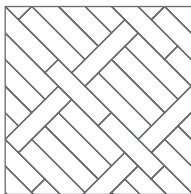
LOOM PLAY #23



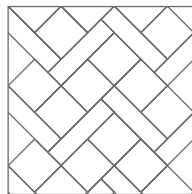
LOOM PLAY #24



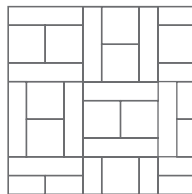
LOOM PLAY #25



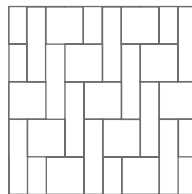
LOOM PLAY #26



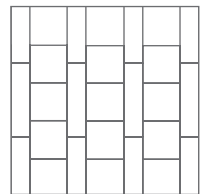
LOOM PLAY #27



LOOM PLAY #28



LOOM PLAY #29



LOOM PLAY #30



**LOOM<sup>+</sup>**  
**CREATE**  
**YOUR OWN DESIGN**

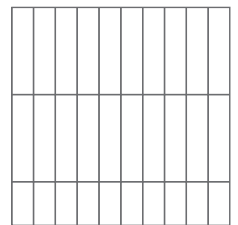


GLOBAL  
REFERENCES

# Restaurant



FQ-2601 FQ-2603  
FQ-2604 FQ-2606



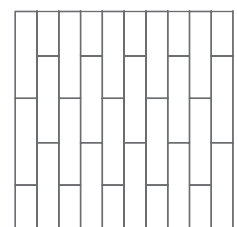
LOOM PLAY #08



## Hospitality



FQ-2603 FQ-2604  
FQ-2606

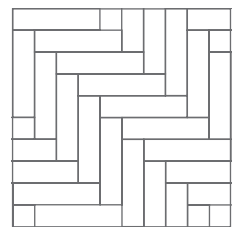


LOOM PLAY #24

Retail shop



FQ-2601 FQ-2606



LOOM PLAY #21

## Healthcare



LOOM+ fray-proof lets you freely cut out the tiles in any creative forms.

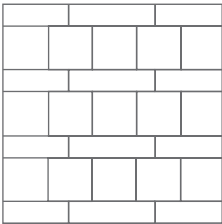


FQ-2601 FQ-2602 FQ-2603  
FQ-2604 FQ-2606

Education & Libraries

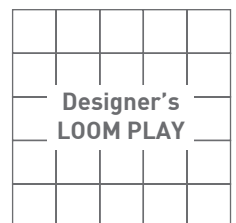


FQ-2601 FQ-2602  
FQ-2605 FQ-2606



LOOM PLAY #30

## Corporate



FQ-2603 FQ-2604  
FQ-2605

## Sports Center



FQ-2601 FQ-2602  
FQ-2606














# TECHNICAL INFORMATION

## 1. Size & Packing

Size(mm)	Thickness(mm)	Pcs/Box	m'/Box	Kg/m'
500x500	3	16 pcs/box	4 m'	5.0
	5	10 pcs/box	2.5m'	8.2
250x1000	3	16 pcs/box	4 m'	5.0
	5	10 pcs/box	2.5m'	8.2

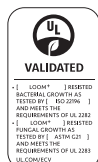
## 2. Test Result

Test Item		Standard	LOOM <sup>+</sup>
Level of use		EN 685	33
Fraying		EN 1814	Frayproof
Thermal resistance		ISO 8302	0.02m²K/W
Castor chair resistance		EN 985	No damage
Dimensional stability		ISO 23999 EN 986	≤ 0.10% ( Norm: ≤ 0.25% ) Passed
Fire resistance		EN 13501-1	Bfl -s1
Indoor air quality			Low VOC (floor score certified)
Underfloor heating		EN 12524	Suitable
Light fastness		ISO 105-B02	≥ 6
Slip resistance		DIN 51130 EN 13893	R11 DS
Flexibility		ISO 24344	Passed
Impact sound insulation		ISO 10140-3	9dB
Body Voltage		EN 1815	≤ 2KV
Squareness & Straightness		ISO 24342 ASTM F2055	No deviation ≤ 0.01 in
Residual indentation		ISO 24343-1 ASTM F1914	≤ 0.1mm < 8%
Resistance to chemicals		ISO 26987 ASTM F925	No Defects No Defects

## 3. Caution

Condition in at least 19°C or the normal temperature of the room where the product is to be laid, for at least 48 hours before installing. Cartons must be stacked less than 5 high and tiles removed 30 minutes before use. The site conditions must be maintained during installation and for at least 48 hours after completion. NOX Corporation will not accept claims where these instructions have not been followed.

## 4. Certificate



Please visit [www.noxglobal.com](http://www.noxglobal.com) for detailed installation / maintenance guides and technical information.

Reinventing Spaces



WOVEN DESIGN FLOORING

Designed and Manufactured by NOX Corporation

**Design Center & Office**

KD Center, 355, Hyoryeong-ro, Seocho-gu, Seoul, 06643 Korea

Tel +82-2-520-7600

Fax +82-2-598-9674

[www.noxglobal.com](http://www.noxglobal.com)

E-mail [info@noxglobal.com](mailto:info@noxglobal.com)

**NOX Corp. | KOREA**

Shinho Factory

Shinho 2nd Factory, Yedang

Enbo Factory

Godeok Factory

Bongsan Factory

Deoksan Factory

Nox Exterior Factory

**NOX US | USA**

NOX US

P.O. Box 824

931 S. Springville Avenue

Fostoria, OH 44830

Office +01-419-701-5060

Fax +01-419-701-5058

**NOX ASEAN | VIETNAM**

NOX ASEAN

Road NO.8, Nhon Trach 6 Ip, Dong Nai, Vietnam

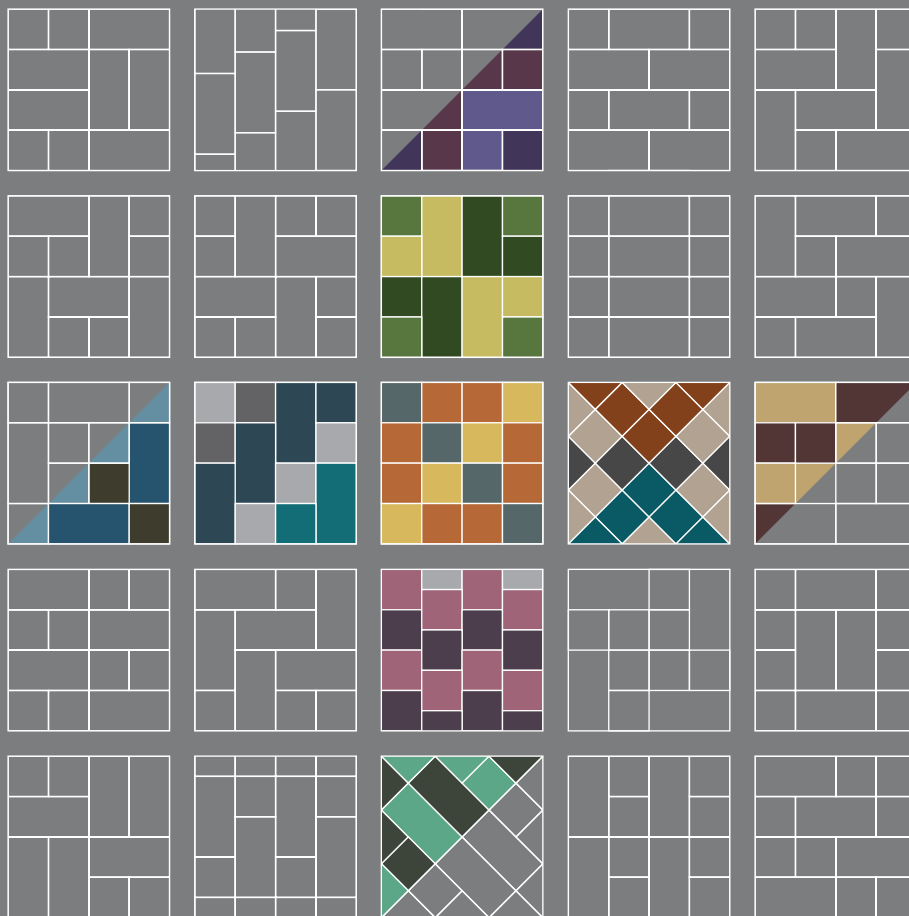
Office +084-251-3684244

Fax +084-251-3684255



# POP

Vibrant & Dazzling



## Loom<sup>+</sup>

WOVEN DESIGN FLOORING

LOOM+  
DIFFERENCE

# LOOM+ DIFFERENCE

DESIGN AND TECHNOLOGY  
ARE WOVEN TOGETHER

## Better Floor

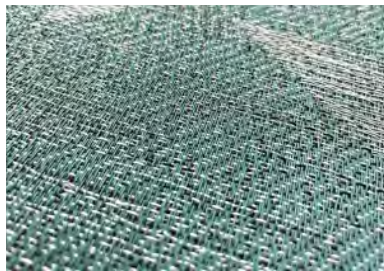
LOOM+ POP consists of two pattern types in similar color schemes and two tile sizes, offering an infinite design spectrum unique to LOOM+.

## Distinguished NOX EMT™ Core Structure

The first woven flooring with proven NOX EMT™ Core structure that ensures the most stable and durable installation.

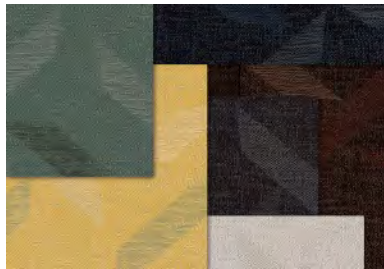
# LOOM+ DESIGN

PLAY with COLOR, SIZE and TEXTURE



## Profound color composition

Realizing multiple tones of color - carefully selected by artists - we provide you with very unique colors that express LOOM+ in harmony with surrounding interiors.



## Infinite array of color and textures

Available in myriad colors covering diverse tones like neutral, cool, warm, light and dark tones, we give you unique design patterns.



## Designed for mix & match

Creative and unique 'mix & match' only by LOOM+ is realized by introducing the same weaving system to various design patterns.



50x50cm  
Tile size



25x100cm  
Plank size

## Optimal 2 size variation

With our unique 2 module sizes of 50cmx50cm and 25cmx100cm, the first introduced in woven flooring market, you can elevate flat environments to inspiring interior spaces.

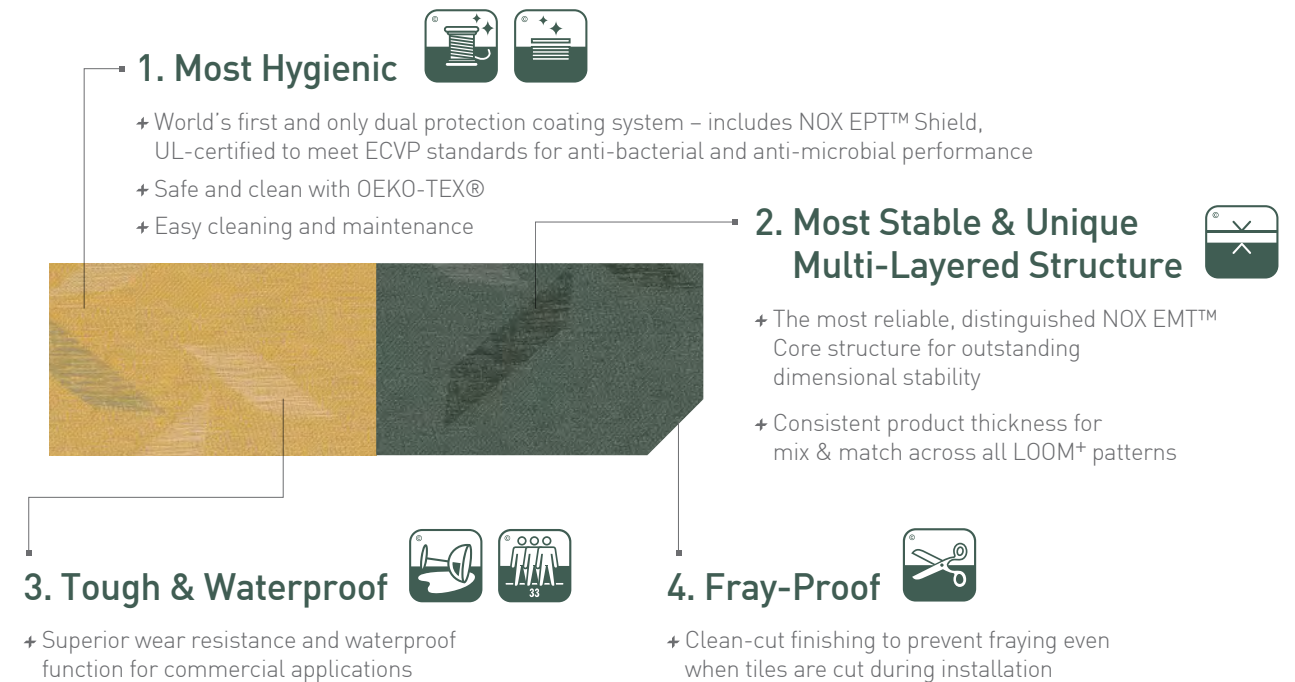
# LOOM+ TECHNOLOGY

PROVEN INNOVATION



## Distinguished NOX EMT™ Core Structure

NOX EMT™ Core structure featured with innovative functionality and safety, proven in more than 50 countries over 20 years



**Safe**  
Certified non-toxic, phthalate-free, and fiberglass-free fabric



**Quick**  
Quick and easy loose lay® installation without glue



**Easy**  
Minimal cleaning time and low maintenance



**Silent & Soft**  
Soft surface absorbing sound



**Non-Slip**  
Slip-resistance with woven fabric surface



**Colorfast**  
Colorfast properties retain gorgeous original colors over time

# POP

## Vibrant & Dazzling

LOOM+ POP collection proposes a uniquely creative design that spotlights an area while easily blending in with its surroundings.

This upbeat pattern scatters parallelograms of differing shades onto a plain jacquard fabric of similar color schemes. The design's bold and energetic image is maximized with a widened, brighter color selection.

Enrich your space with LOOM+ POP, a lively, modern collection that is stylish but nonetheless caters to universal taste.



FQ-2701



FQ-2702



FQ-2703



FQ-2704



FQ-2705



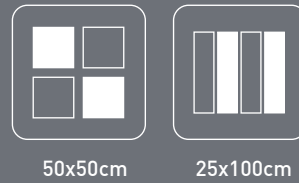
FQ-2706

Each box contains a random set of pieces, which present different parts of the pattern.

Reinvent Spaces with

# LOOM<sup>+</sup> PLAY!

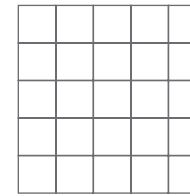
All work together in any combination, giving you the freedom to create your own design by mixing & matching different patterns and colors in 2 size variations.



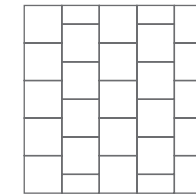
50x50cm

25x100cm

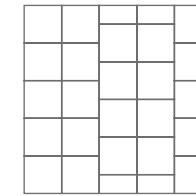
## INSTALLATION CONCEPT GUIDE



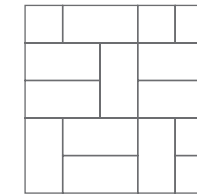
LOOM PLAY #1



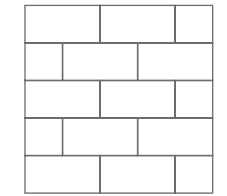
LOOM PLAY #2



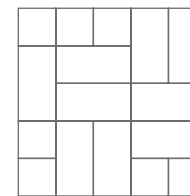
LOOM PLAY #3



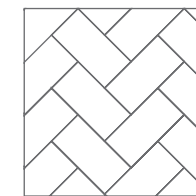
LOOM PLAY #4



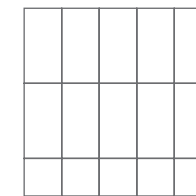
LOOM PLAY #5



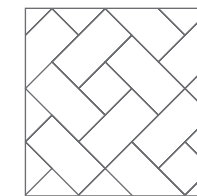
LOOM PLAY #6



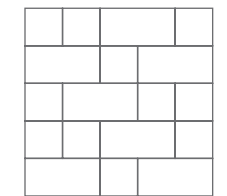
LOOM PLAY #7



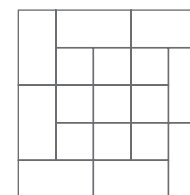
LOOM PLAY #8



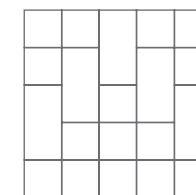
LOOM PLAY #9



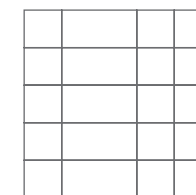
LOOM PLAY #10



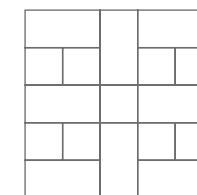
LOOM PLAY #11



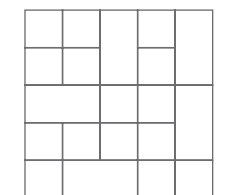
LOOM PLAY #12



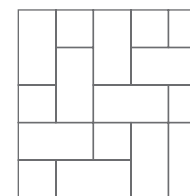
LOOM PLAY #13



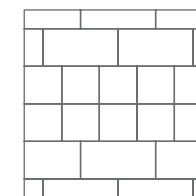
LOOM PLAY #14



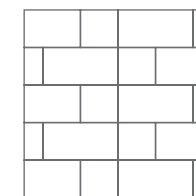
LOOM PLAY #15



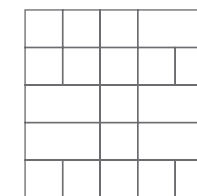
LOOM PLAY #16



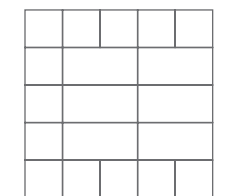
LOOM PLAY #17



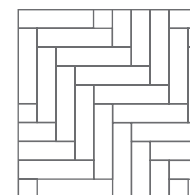
LOOM PLAY #18



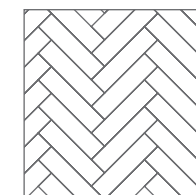
LOOM PLAY #19



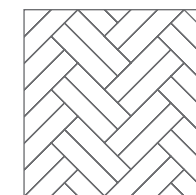
LOOM PLAY #20



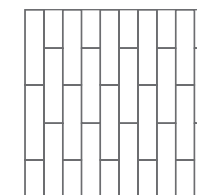
LOOM PLAY #21



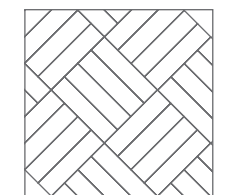
LOOM PLAY #22



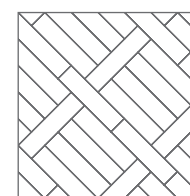
LOOM PLAY #23



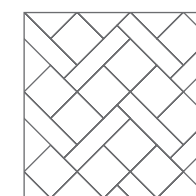
LOOM PLAY #24



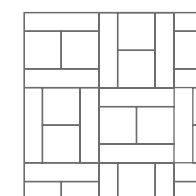
LOOM PLAY #25



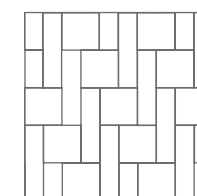
LOOM PLAY #26



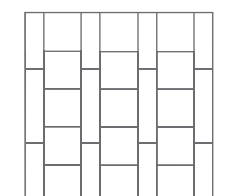
LOOM PLAY #27



LOOM PLAY #28

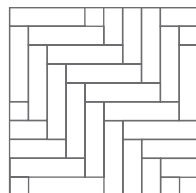


LOOM PLAY #29

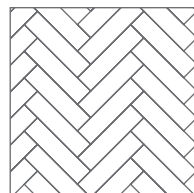


LOOM PLAY #30

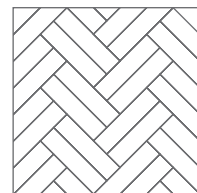
## NEW LOOM<sup>+</sup> PLAY!



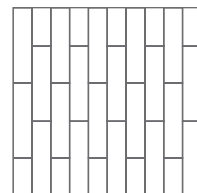
LOOM PLAY #21



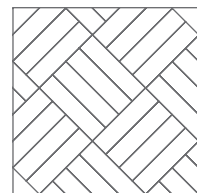
LOOM PLAY #22



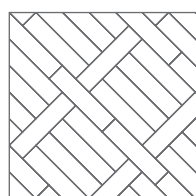
LOOM PLAY #23



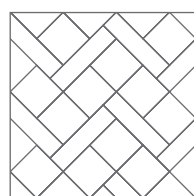
LOOM PLAY #24



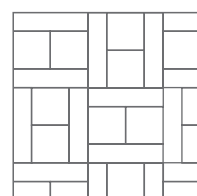
LOOM PLAY #25



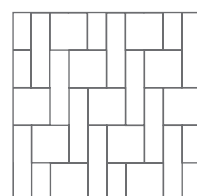
LOOM PLAY #26



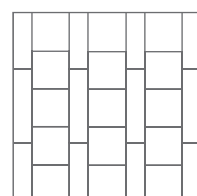
LOOM PLAY #27



LOOM PLAY #28



LOOM PLAY #29



LOOM PLAY #30

GLOBAL  
REFERENCES

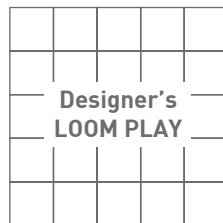
# LOOM<sup>+</sup> CREATE YOUR OWN DESIGN

LOOM<sup>+</sup> POP collection can also be installed with plain jacquard fabrics of the same color scheme. Colors not included in the official collection and their respective plain jacquard fabrics are available upon request.

FQ-2702  
NT207-8 (plain)



Restaurant

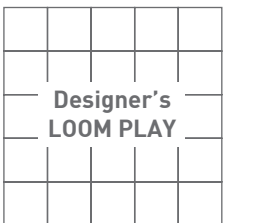


FQ-2701 FQ-2703  
FQ-2705

Corporate



LOOM+ POP grey is not included in the official collection, but is available upon request.

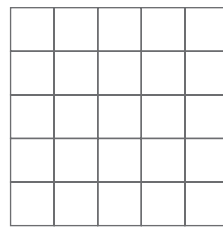


FQ-2701 FQ-2702  
NT206-6 (grey)

Hospitality



FQ-2701 FQ-2702  
FQ-2706

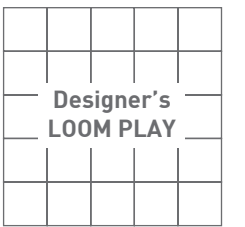


LOOM PLAY #1

Hospitality



FQ-2701 FQ-2702  
FQ-2703 FQ-2704



Designer's  
LOOM PLAY

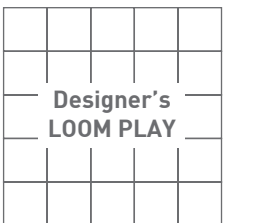


Education & Libraries



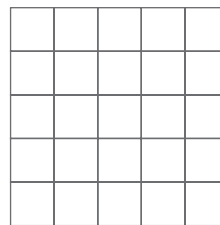
FQ-2701 FQ-2702  
FQ-2703 FQ-2704

Retail shop



FQ-2701 FQ-2706

## Sports Center



LOOM PLAY #1

FQ-2701 FQ-2702

## TECHNICAL INFORMATION

### 1. Size & Packing

Size(mm)	Thickness(mm)	Pcs/Box	m <sup>2</sup> /Box	Kg/m <sup>2</sup>
500x500	3	16 pcs/box	4m <sup>2</sup>	5.0
	5	10 pcs/box	2.5m <sup>2</sup>	8.2
250x1000	3	16 pcs/box	4m <sup>2</sup>	5.0
	5	10 pcs/box	2.5m <sup>2</sup>	8.2

### 2. Test Result

Test Item		Standard	LOOM <sup>+</sup>
Level of use		EN 685	33
Fraying		EN 1814	Frayproof
Thermal resistance		ISO 8302	0.02m <sup>2</sup> K/W
Castor chair resistance		EN 985	No damage
Dimensional stability		ISO 23999 EN 986	≤ 0.10% ( Norm: ≤ 0.25% ) Passed
Fire resistance		EN 13501-1	Bfl -s1
Indoor air quality			Low VOC (floor score certified)
Underfloor heating		EN 12524	Suitable
Light fastness		ISO 105-B02	≥ 6
Slip resistance		EN 13893	DS
Flexibility		ISO 24344	Passed
Impact sound insulation		ISO 10140-3	9dB
Body Voltage		EN 1815	≤ 2KV
Squareness & Straightness		ISO 24342 ASTM F2055	No deviation ≤ 0.01 in
Residual indentation		ISO 24343-1 ASTM F1914	≤ 0.1mm < 8%
Resistance to chemicals		ISO 26987 ASTM F925	No Defects No Defects

### 3. Caution

Condition in at least 19°C or the normal temperature of the room where the product is to be laid, for at least 48 hours before installing. Cartons must be stacked less than 5 high and tiles removed 30 minutes before use. The site conditions must be maintained during installation and for at least 48 hours after completion. NOX Corporation will not accept claims where these instructions have not been followed.

### 4. Certificate



Please visit [www.noxglobal.com](http://www.noxglobal.com) for detailed installation / maintenance guides and technical information.

Reinventing Spaces



WOVEN DESIGN FLOORING

Designed and Manufactured by NOX Corporation

**Design Center & Office**

KD Center, 355, Hyoryeong-ro, Seocho-gu, Seoul, 06643 Korea  
Tel +82-2-520-7600  
Fax +82-2-598-9674  
www.noxglobal.com  
E-mail info@noxglobal.com

**NOX Corp. | KOREA**

Shinho Factory  
Shinho 2nd Factory, Yedang  
Enbo Factory  
Godeok Factory  
Bongsan Factory  
Deoksan Factory  
Nox Exterior Factory

**NOX US | USA**

NOX US  
P.O. Box 824  
931 S. Springville Avenue  
Fostoria, OH 44830  
Office +01-419-701-5060  
Fax +01-419-701-5058

**NOX ASEAN | VIETNAM**

NOX ASEAN  
Road NO.8, Nhon Trach 6 Ip, Dong Nai, Vietnam  
Office +084-251-3684244  
Fax +084-251-3684255